



MAJOR ROADWORK



I-95 IN BALTIMORE CITY

 @TheMDTA #i95bmore

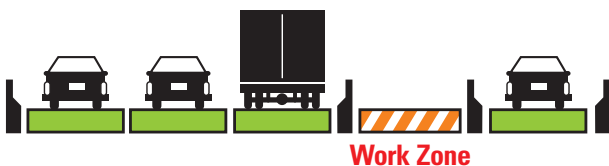
**Changing traffic patterns through Fall 2015.
EXPECT MAJOR DELAYS or
Use I-695 or I-895 if traveling thru Baltimore City.**

Southbound I-95

- On or about Fri. **June 19**: Southbound I-95 traffic lanes will shift with all four lanes to the left from the Fort McHenry Tunnel to Hanover Street. The ramp from Key Highway to southbound I-95 will be closed 24/7 for about one month. The **detour route** will direct motorists to East McComas St., to Hanover St., to southbound I-95.



- On or about Sun. **June 28** for approx. 3-4 weeks: Southbound I-95 traffic lanes will split with three lanes to the left and one lane to the right. The on ramp from Washington Blvd. to I-95 southbound will also close.



NOTE: All dates and times are approximate and dependent on weather or other work related variables.

Stay Alert So No One Gets Hurt!

- Seek alternate routes during peak travel periods (6-9 a.m.; 3-7 p.m.; Mon. - Fri.).
- Work-zone speed limits on northbound and southbound I-95 are reduced to **50 mph**.
- Work-zone safety speed cameras in use.

Northbound I-95

- MAJOR DELAYS EXPECTED continue through mid-August. **The left lane on northbound I-95 between Exit 50 (Caton Ave.) and Exit 52 (Russell St.) will be continuously closed (24/7) for two months.** The remaining three northbound I-95 traffic lanes will split with two lanes to the left and one lane to the right. To exit at Russell St., motorists should follow signs to use Exit 50 (Caton Ave.), keep left on the ramp, continue to northbound I-95, and exit at Russell St.



- On or about Tues. **July 14** for approx. 3 weeks: **24/7 single lane access from northbound I-95 to I-395 will be in effect.** To get downtown from northbound I-95, use Exit 52 (Russell St.) or Exit 55 (Key Hwy.). If coming from the south, use northbound MD 295 to get downtown.
- On or about **Sat. July 11**: The ramp to Exit 55 (Key Hwy.) will reopen.

Commuters leaving Baltimore City should use Key Hwy. to enter northbound I-95 to help minimize delays.

