

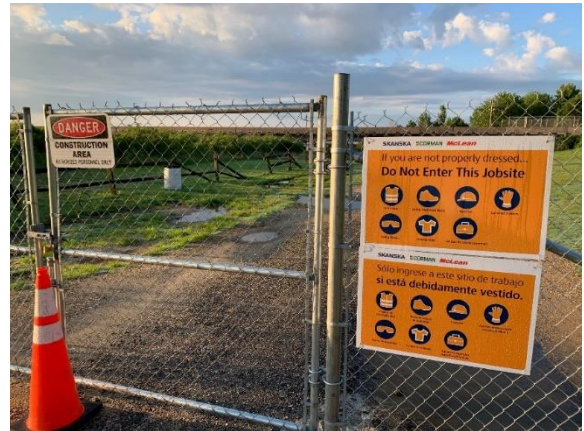
## With Major Construction Underway, the Public is Urged to Avoid Designated Project Work Areas on Land and Water

With heavy construction of the new Nice/Middleton Bridge now underway, the Maryland Transportation Authority (MDTA) and Skanska-Corman-McLean (SCM) contractor team urge the public to exercise heightened caution around designated work areas and under no circumstances enter these work areas along the shore and in the river immediately north of the existing bridge.

The New Nice/Middleton Bridge replacement project will have active construction work zones concurrently along US 301 and on the Potomac River. Work zones are closed to the public to ensure everyone's safety. All recreational, commercial and public activities are prohibited within the construction work areas, which are designated by safety and security signage, fencing, and other warning devices in order to maintain safe distances from construction activities and equipment.

Motorists are urged to slow down, avoid taking their eyes off the road to look at construction activities/equipment, and pay extra attention when approaching the project area.

MDTA and SCM thank you for supporting our safety-first culture and for your cooperation and patience as the new Nice/Middleton Bridge is built.



*Fencing and signage have been placed around the project's perimeter.*