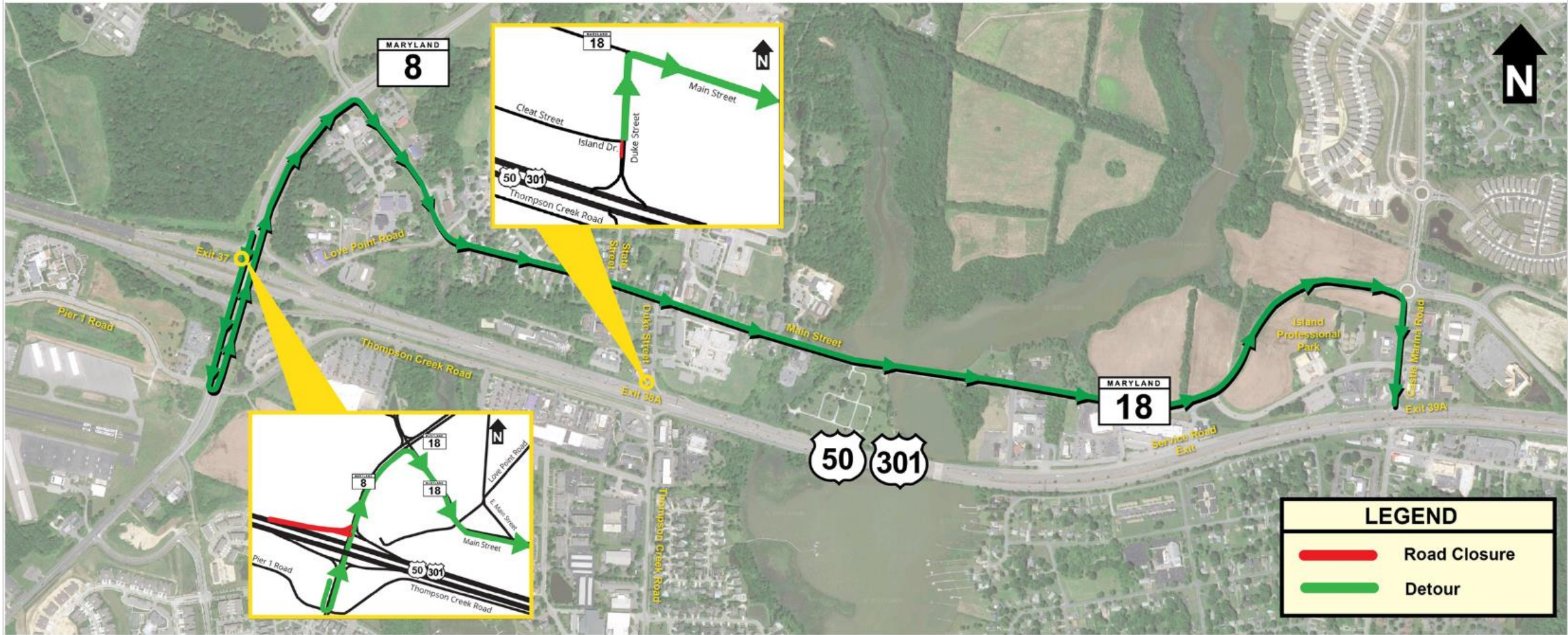


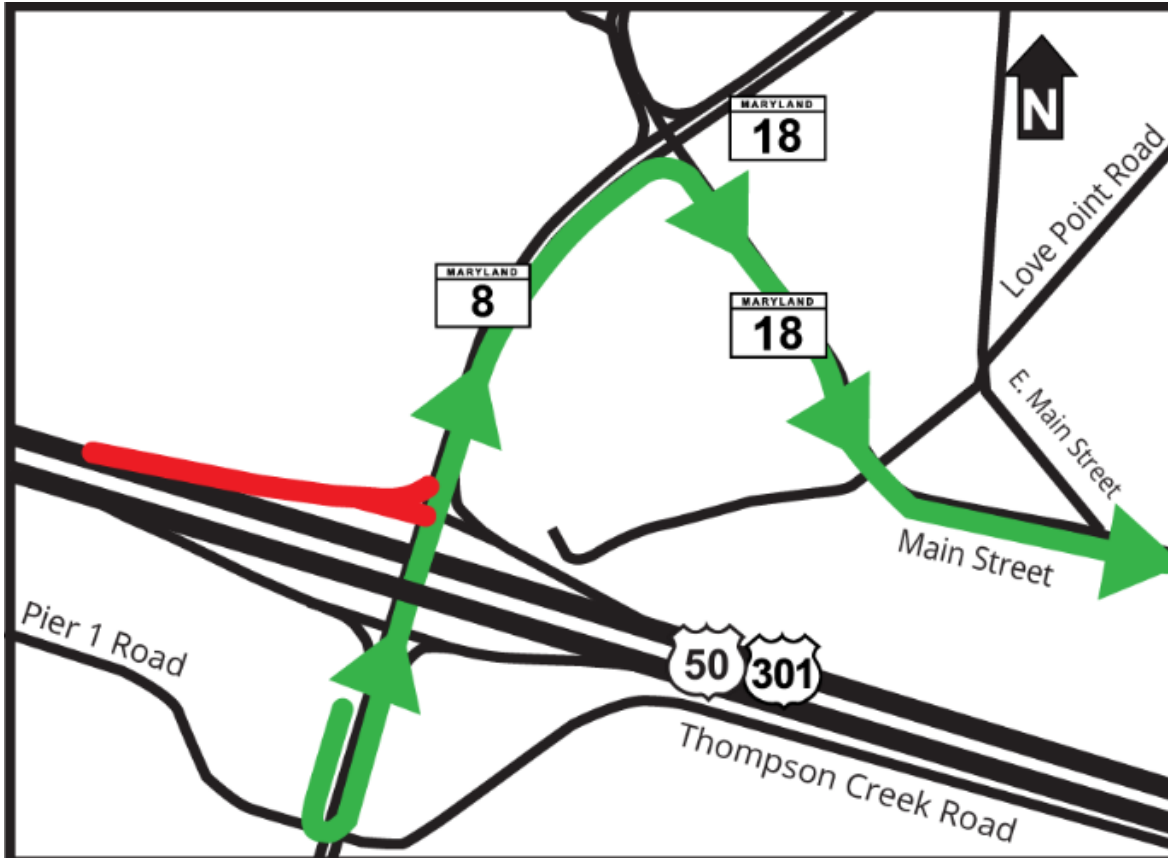
Bay Bridge Ramp Management 2024

Queen Anne's County

Westbound US 50/301 Ramp Management (2024)

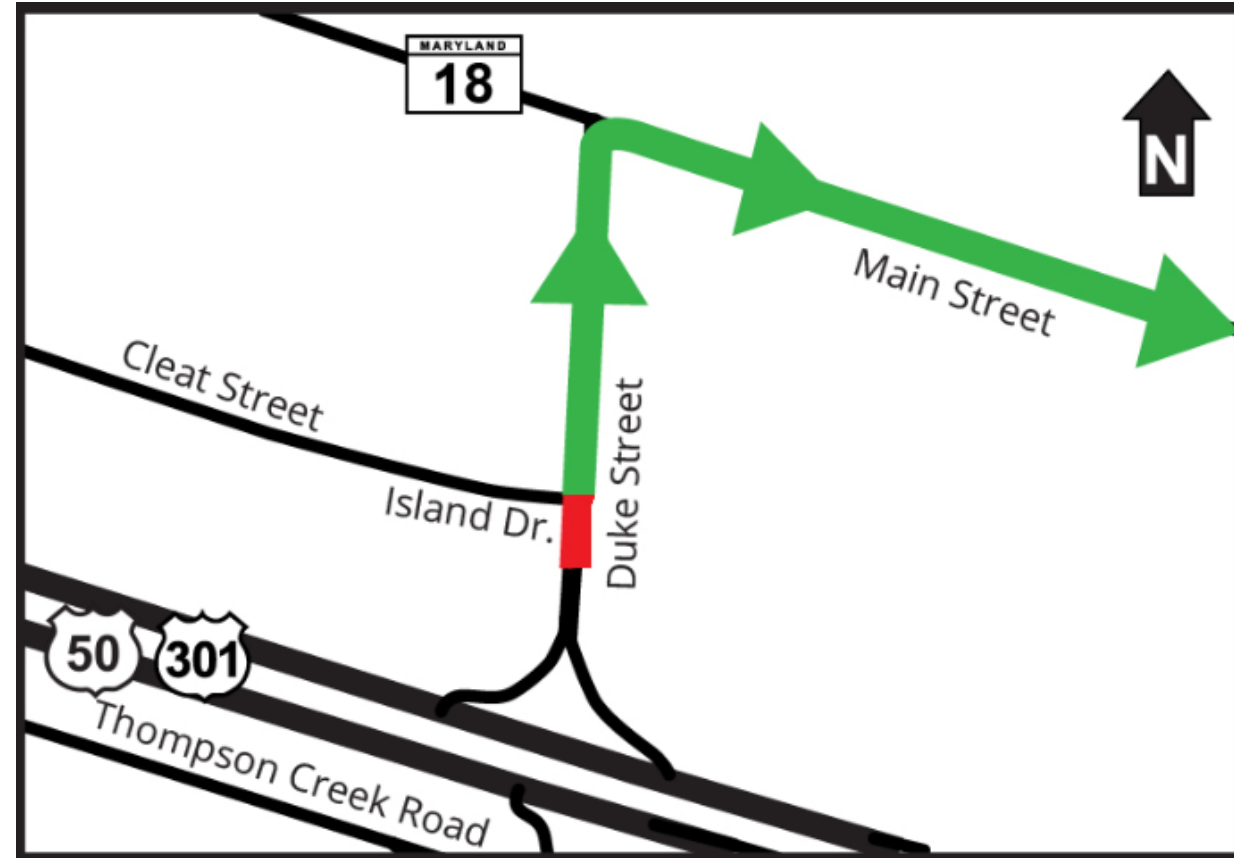


Westbound US 50/301 Ramp Management (2024)



MD 8 Exit 37

No access to westbound US 50/301 from 10 a.m. to 8 p.m. during ramp management weekends.



Duke St Exit 38A

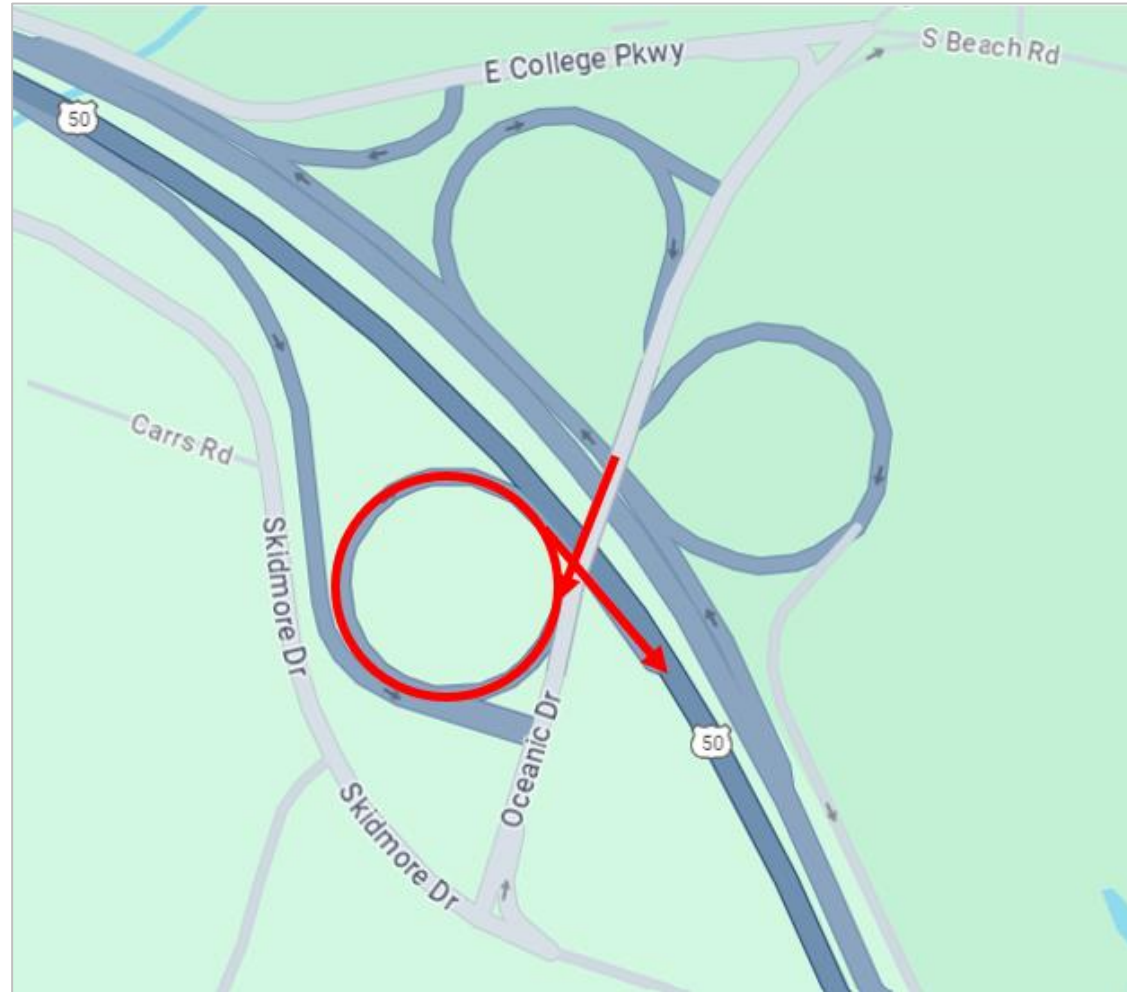
No access to/from westbound US 50/301 from 10 a.m. to 8 p.m. during ramp management weekends.

Anne Arundel County

US 50 / Service Road Traffic Safety Operations Broadneck Peninsula Summer 2024 Ramp Management



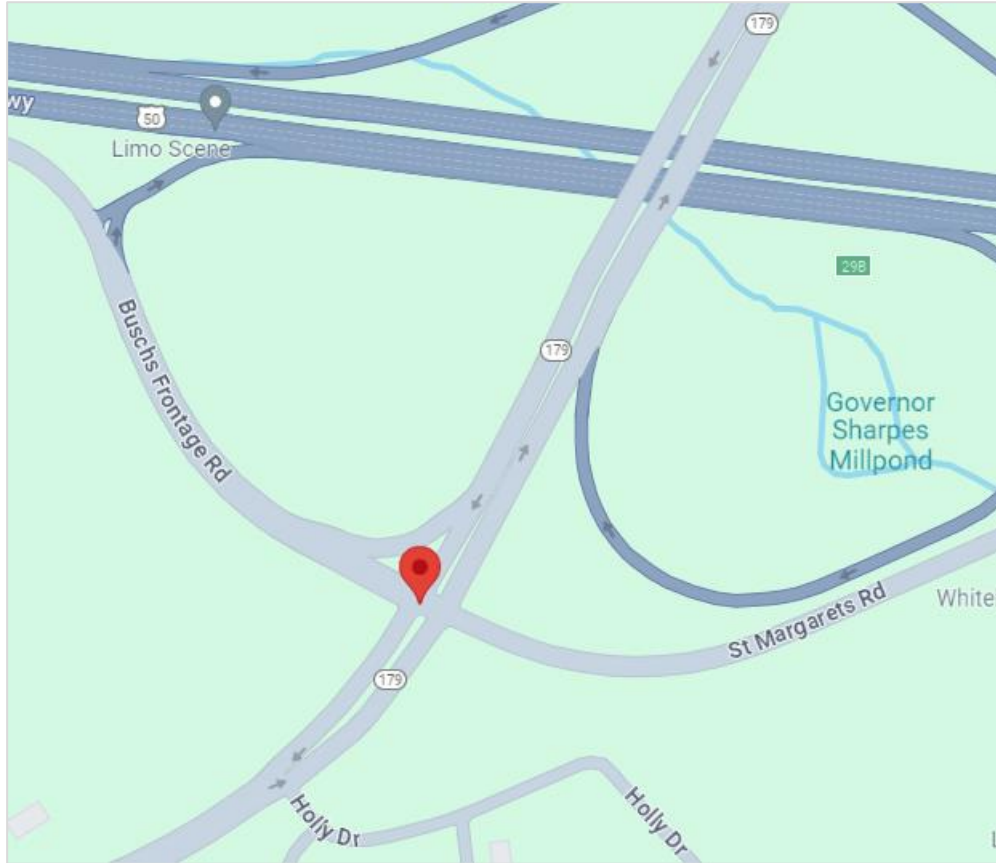
Eastbound US 50 Ramp Management (2024)



US 50 EB - Exit 32 (Oceanic Drive)

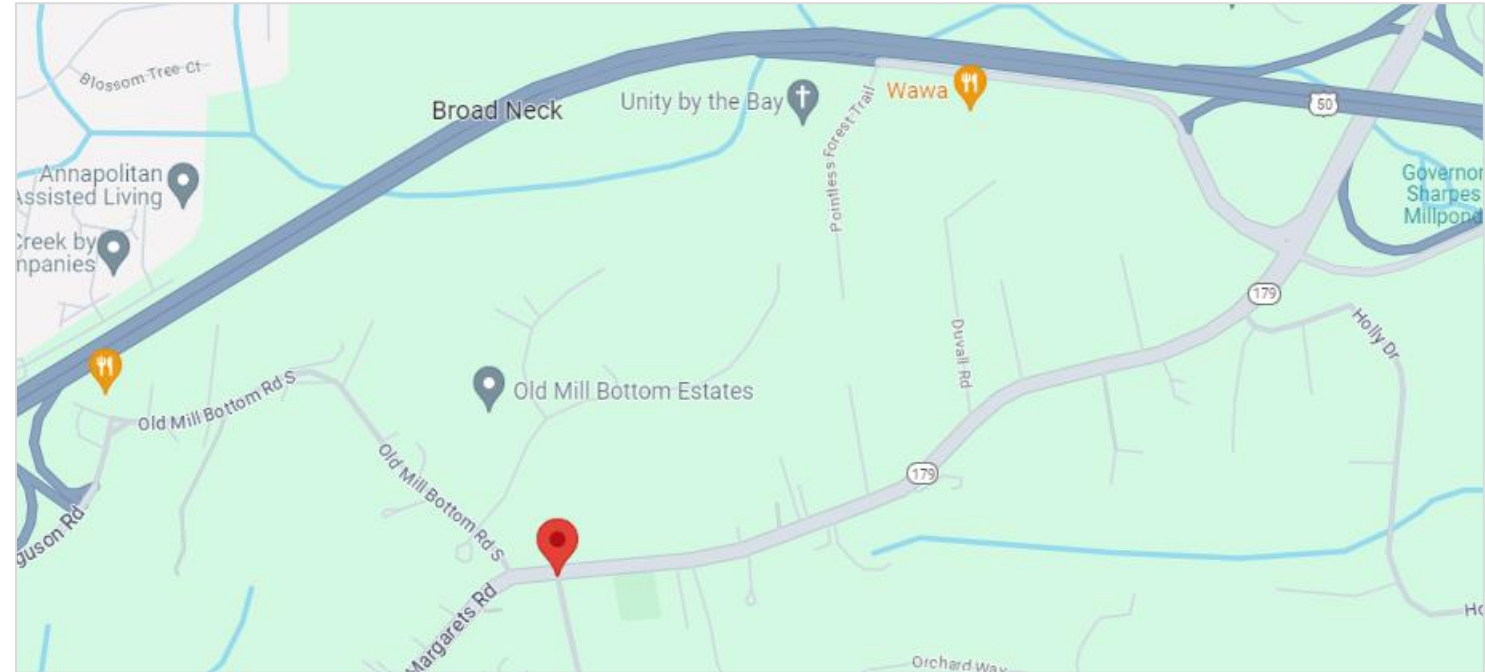
No access to EB US 50 Fridays at 10 a.m. to Saturdays at 6 p.m.

MD 179 (St. Margaret's Road) Modifications



MD 179 / Busch's Frontage Road

full-color operation for the intersection signal was activated on Friday, May 24



MD 179 / Pleasant Plains Road / Old Mill Bottom Road

New traffic signal for the intersection was activated on Thursday, May 23.

US 50 - Anne Arundel County

